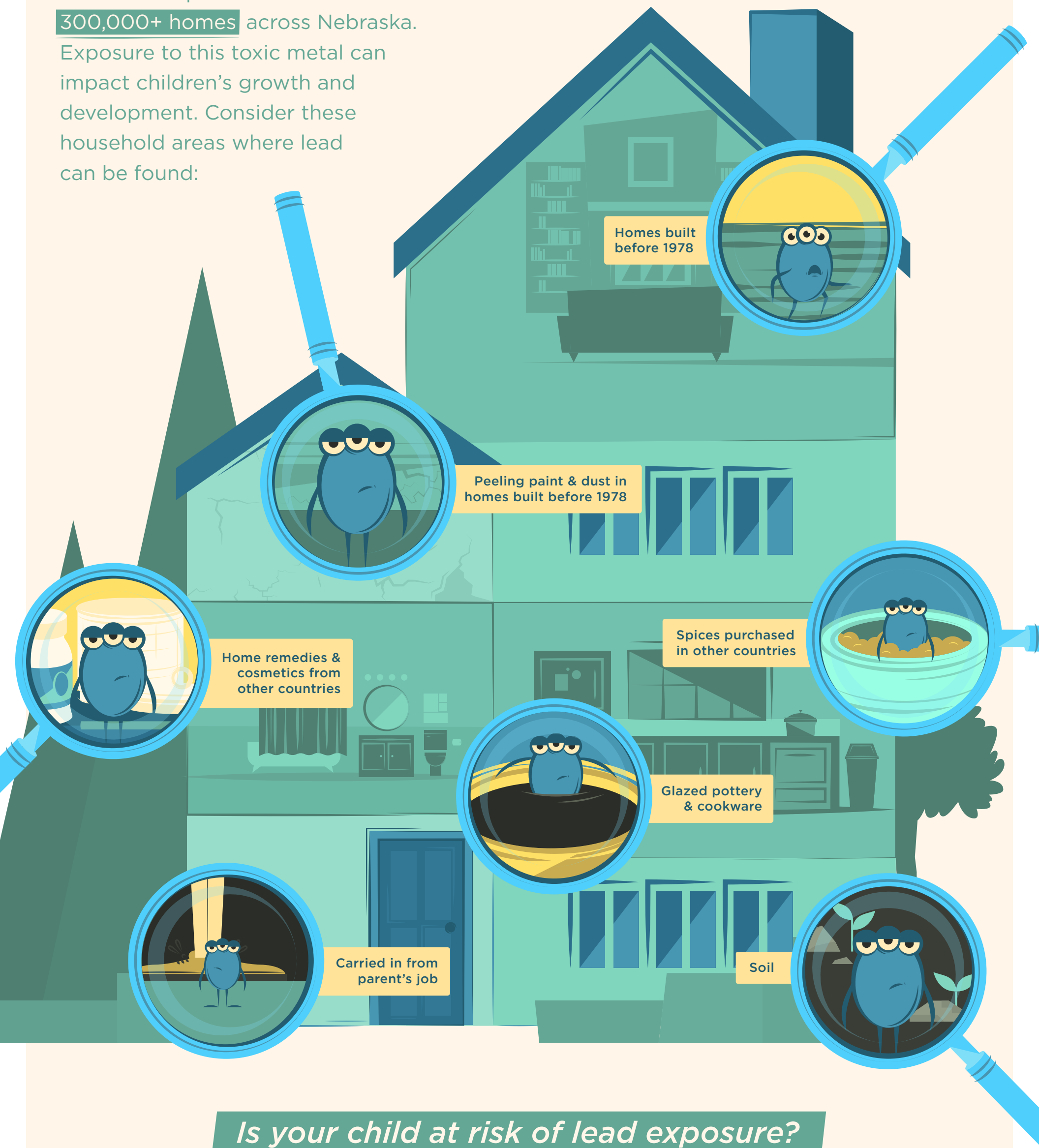


Keep Nebraska homes lead safe!

Lead-based paint is still found in **300,000+ homes** across Nebraska.

Exposure to this toxic metal can impact children's growth and development. Consider these household areas where lead can be found:



Is your child at risk of lead exposure?

Find resources and information at
Leadsafe.ne.gov | 1-888-242-1100

Disclaimer: This publication was supported by Cooperative Agreement number N0E2EH001364, funded by the Centers for Disease Control and Prevention. Its contents are solely the responsibility of the authors and do not necessarily represent the official views of the Centers for Disease Control and Prevention or the Department of Health and Human Services.